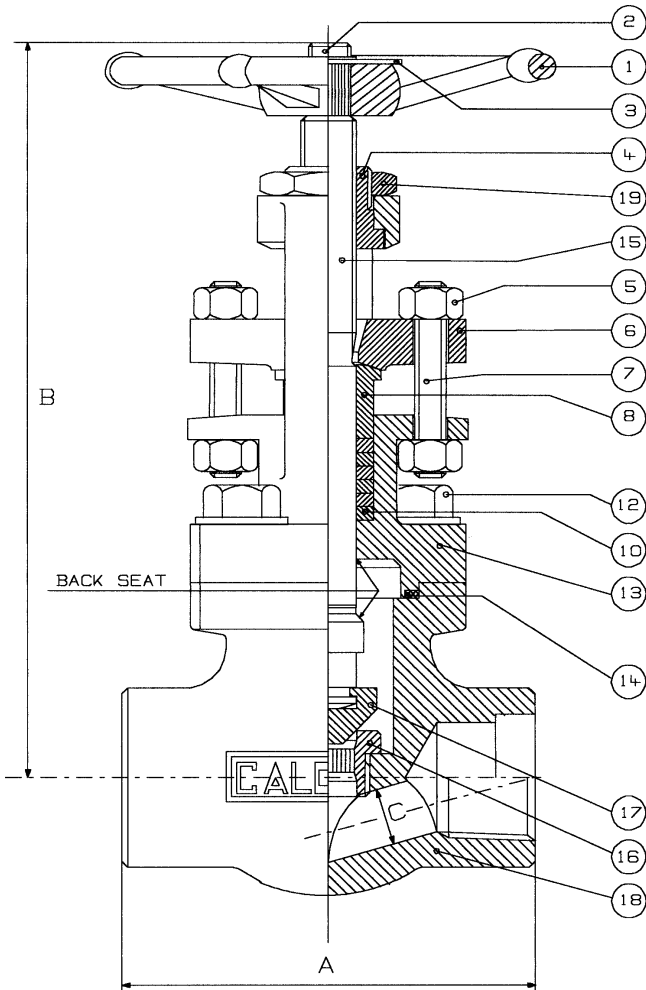


VALVE DATA SHEET

FLOW CONTROL COMPANY LTD

ORDER POR00016
ITEM : 3.00 ÷ 3.10



CALOBRI FIG.: **D8 A105-F6-HFS**
GLOBE VALVE S.800 O.S & Y SQUARE BOLTED
BONNET REDUCED BORE SOCKET WELD OR
THREADED NPT

LIST OF COMPONENT / MATERIAL SPECIFICATION

Component No.	Component Name	Material Specification
001	HANDWHEEL	CARBON STEEL
002	WHEELNUT	CARBON STEEL
003	NAMEPLATE	ALLUMINIUM
004	YOKE NUT	ASTM A582 TYPE 416
005	GLAND NUT	ASTM A194 2H
006	GRAND FLANGE	ASTM A105
007	GLAND STUD	AISI 410
008	GLAND	ASTM A276 TYPE 410
009		
010	PACKING	GRAPHITE
011		
012	BOLTS	ASTM A193 B7
013	BONNET	ASTM A105
014	GASKET	316+GRAPHITE SPIRAL WOUND
015	STEM	ASTM A276 TYPE 410
016	SEAT	ASTM A276 TYPE 410 + STELLITE GR.6
017	DISC	ASTM A276 TYPE 410
018	BODY	ASTM A105
019		
020		

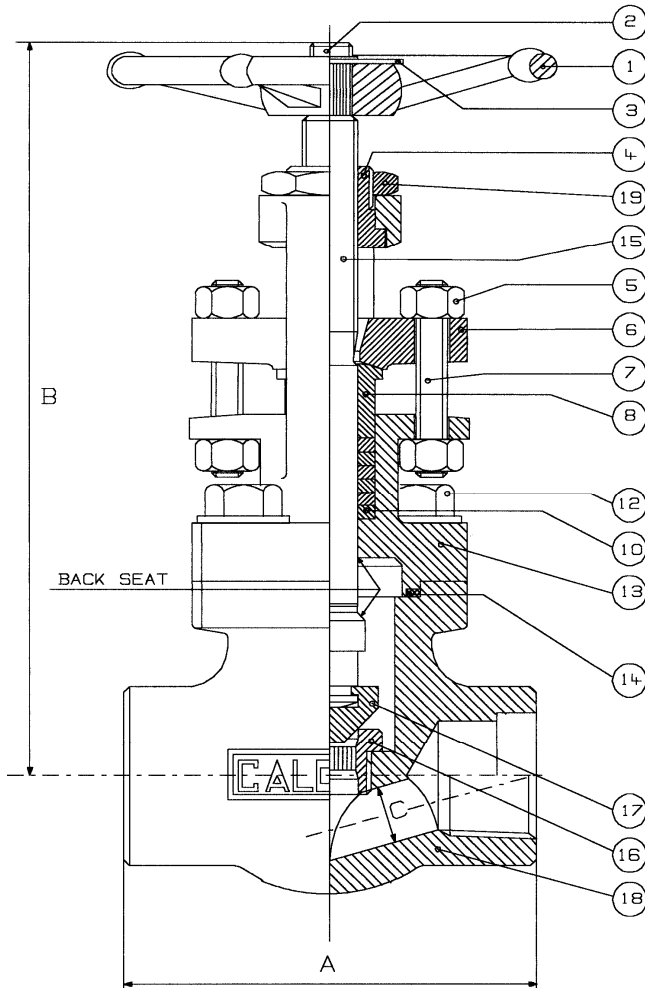
DIMENSION AND WEIGHT

REDUCED BORE		A	B	C	Weight Kg.
Dn	Fig.n°	End to end	Centre to open	Bore Diam.	
-					
15	D8	80	150	9	1.7
20		90	165	13	2.3
25		110	180	18	3.6
32		127	215	23	5.5
40		155	250	30	7.5
50		170	260	35	11.6
-					

VALVE DATA SHEET

FLOW CONTROL COMPANY LTD

ORDER POR00016
ITEM : 4.00 ÷ 4.10



CALOBRI FIG.: **D8 F316/316**
GLOBE VALVE S.800 O.S & Y SQUARE BOLTED
BONNET REDUCED BORE SOCKET WELD OR
THREADED NPT

LIST OF COMPONENT / MATERIAL SPECIFICATION		
001	HANDWHEEL	CARBON STEEL
002	WHEELNUT	CARBON STEEL
003	NAMEPLATE	ALLUMINIUM
004	YOKE NUT	ASTM A582 TYPE 303
005	GLAND NUT	ASTM A194 Gr.8
006	GRAND FLANGE	ASTM A182 F304
007	GLAND STUD	ASTM A193 B8
008	GLAND	ASTM A479 TYPE 304
009		
010	PACKING	GRAPHITE
011		
012	BOLTS	ASTM A193 B8
013	BONNET	ASTM A182 F316
014	GASKET	316+GRAPHITE SPIRAL WOUND
015	STEM	ASTM A479 TYPE 316
016	SEAT	ASTM A479 type 316
017	DISC	ASTM A182 F316
018	BODY	ASTM A182 F316L
019		
020		

DIMENSION AND WEIGHT					
REDUCED BORE		A	B	C	Weight Kg.
Dn	Fig.n°	End to end	Centre to open	Bore Diam.	
-					
15	D8	80	150	9	1.7
20		90	165	13	2.3
25		110	180	18	3.6
32		127	215	23	5.5
40		155	250	30	7.5
50		170	260	35	11.6
-					