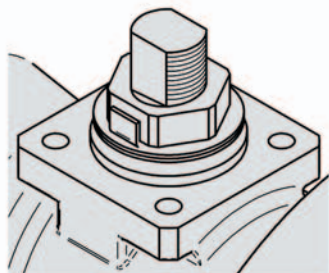


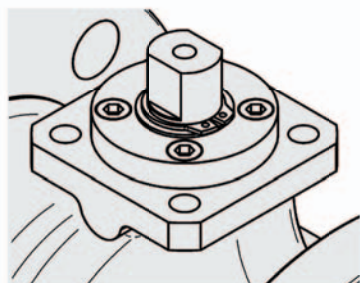
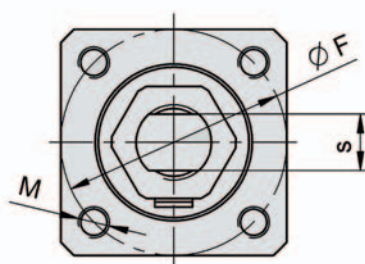
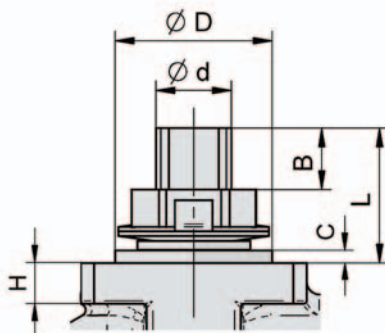


DT-BV13 Rev.E

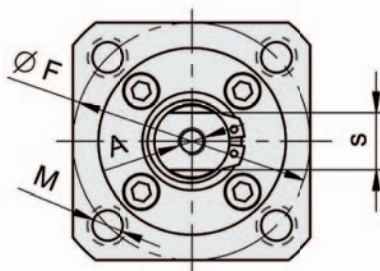
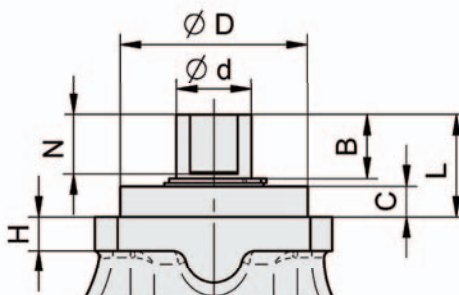
PQR-i Capi



DN 1/2" hasta DN 2"
DN 1/2" up to 2"



DN 3" hasta DN 12"
DN 3" up to 12"



	ISO 5211	Ø D	Ø F	C	Ø d	s	A	B	Ø M	N	L	H
1/2"	F03s	25	36	2	M10	7		8	M5	-	18	6
3/4"	F03s	25	36	2	M10	7		8	M5	-	18	6
1"	F03	25	36	2	M12	9		10	M5	-	21.5	6
1 1/2"	F05	35	50	2	M18	14		15	M6	-	32	7
2"	F05	35	50	2	M18	14		15	M6	-	32	7
3"	F07	55	70	9	22	17	M8	19	M8	17	30	10
4"	F10	70	102	11	28	22	M10	26	M10	22	40	12
6"	F10	70	102	11	28	22	M10	26	M10	22	40	12
8"	F12	85	125	14	36	27	M12	32.5	M12	27	50	16
10"	F14	100	140	17	48	36	M16	42.5	M16	36	63	16
12"	F16	130	165	20	60	46		54	M20	46	78	18

Predicted torques, Reduced bore, End Entry Floating Ball Valves Design, Type: PQR-i



ISO 17292:2004 and API Standard 608 (4th E. - 2008)

Seat Material: PTFE MOD. (TFM 1600) for **Class 150 & 300**

BTO (Nm)								
VALVE SIZE		PRESSURE (bar)						MAX. ALLOWABLE STEM TORQUE
DN	NPS	10	16	20 Class 150	31	42	50 Class 300	Nm (316)
15	1/2"	4	4	4	4	5	5	18
20	3/4"	5	5	5	5	5	5	18
25	1"	7	8	8	9	10	11	35
40	1 1/2"	17	18	18	20	21	22	128
50	2"	26	27	28	30	31	33	128
80	3"	46	48	50	84	62	67	249
100	4"	65	70	74	86	99	110	529
150	6"	131	146	157	192	235	271	529
200	8"	325	355	375	430	485	524	1049
250	10"	478	580	649	836	1.024	1.161	2475
300	12"	766	901	1.005	--	--	--	5279

Material Factors:

Filled PTFE MOD:	1,25
DEVILON / PCTFE (lip seal):	1,5
PEEK (lip seal):	1,8

Safety Factors for gear box and actuator:

Standard Conditions:	1,5
Severe Conditions:	2
Long inactivity:	2

Minimum

Torque in relation to the position:

BTO:	100%
BTC:	75%

Note: For severe conditions or long inactivity, when valve torque its over M.A.S.T., it is advisable to use an adequate material

Torque for Cryogenic Service:

BTO (Nm)						
FACTOR	TEMPERATURE (°C)					FORMULA
	-29	-50	-104	-160	-196	
X	1,0	1,1	1,5	1,8	2,0	Torque _(T=22°C) x Factor _(T=X°C) = Torque _(T=X°C)

Note: Cryogenic Service: DN 150 & 200 in Class 150 (full rated) i DN 150; 200 & 250 in Class 300 (full rated), use **XM-19**